

# Ultima<sup>®</sup> Underworld<sup>™</sup> II

Labyrinth of Worlds<sup>™</sup>

## PLAYER'S GUIDE

### CONTENTS

<b>Starting The Game</b>	<b>1</b>
<b>Creating Your Character</b>	<b>2</b>
<b>Tutorial Walkthrough: In The Castle Of Lord British</b>	<b>4</b>
<b>Useful Playing Tips</b>	<b>18</b>
<b>The Eight Circles Of Runic Magic</b>	<b>30</b>
<b>Skill List</b>	<b>33</b>
<b>The Runes Of Magic</b>	<b>37</b>

## CREATING YOUR CHARACTER

In this section, you design the character you will play, by selecting attributes for him or her. Each attribute is represented by a button. To make a choice, use the mouse to move the cursor onto the option button you want to select and click either mouse button. (You may also use the cursor keys to highlight the option you want — a highlighted option button appears pressed — and then press Enter to select the option.) In order, the choices you must make are:

Choose Player Gender (*Female* or *Male*). Controls whether your Avatar is a woman or a man, and which portraits you may select later. Gender has no effect on your character's strengths or abilities.

Select Handedness (*Right* or *Left*). Determines which hand you use to hold your primary weapon, and thus which is your shield-hand.

### Class

*Bard*. A traveling storyteller or musician.

*Druid*. A person possessed of the sorcerous and martial wisdom of nature.

*Fighter*. A warrior, trained in the military arts since youth.

*Mage*. One learned in the art of sorcery.

*Paladin*. One who uses both steel and sorcery in battle.

*Ranger*. A woodsman, skilled at tracking, hunting and fighting.

*Shepherd*. A fiercely independent tribesman.

*Tinker*. A skilled artisan, knowledgeable in the shaping of materials and the construction of items.

Your character attributes — Strength, Dexterity and Intelligence — are loosely based on your character's profession, in the following manner (H=High, M=Medium, L=Low):

Profession	ST	DX	IQ	Bonus
<i>Bard</i>	M	H	M	L
<i>Druid</i>	M	M	H	L
<i>Fighter</i>	H	M	L	L
<i>Mage</i>	L	M	H	L
<i>Paladin</i>	H	M	M	L
<i>Ranger</i>	M	M	M	M
<i>Shepherd*</i>	L	L	L	H
<i>Tinker</i>	M	H	M	L

(\*The shepherd's large random bonus offsets the low base scores.)

Each of these attributes, in turn, will determine your character's aptitude for some of the twenty skills, listed on page 33. Each skill is listed with its base attribute. Characters who have a high score in a skill's base attribute will find it easier to advance in that skill. Attributes do not change during the course of the game, so be sure you are satisfied with a character's scores before setting off on your adventure.

**Pick Skills.** Your character description includes several skills — abilities you have honed and tasks you have practiced. Many of these skills come automatically, as a result of the character class you choose. (For instance, all mages can use magic so they all begin with *casting* and *mana* skills.)

In addition to the skills you acquire automatically (as a function of your class), you must choose additional skills from a menu of options. This enables you to create a more individualized character, as opposed to accepting a “generic” character. For instance, you may give your Fighter *sword* skill or *axe* skill, or you might choose *lore*, *charisma* or *picklock*, to create a more complex and interesting figure. Each time a skill selection list appears on the right-hand side of the screen, click either button on the skill you want for your character. Some skills are offered more than once. Picking a skill more than once improves that skill even further (at the cost of less ability in other skills).

The list of possible skills you are given to pick from depends on your character’s class. For a list of the skills and their descriptions, refer to page 33 at the end of this manual.

**Portrait.** Select the appearance of your character by clicking on one of the five pictures that appear on the right-hand side of the screen.

**Choose Difficulty.** (*Standard* or *Easy*). In Easy mode, combat is less difficult. Monsters and hostile characters are weaker, and more vulnerable to your attacks. (Note that you can’t change this after you begin playing — to change the difficulty level, you must begin a new game.)

**Name.** The last step in creating your character is to give him or her a name. Type in the name of your choice, then press Enter when done.

**Keep This Character.** Finally, the game asks you whether or not you want to play the game with the character you have just designed. If this is the character you want, answer “Yes.” Otherwise, select “No” and you start over to design another character.

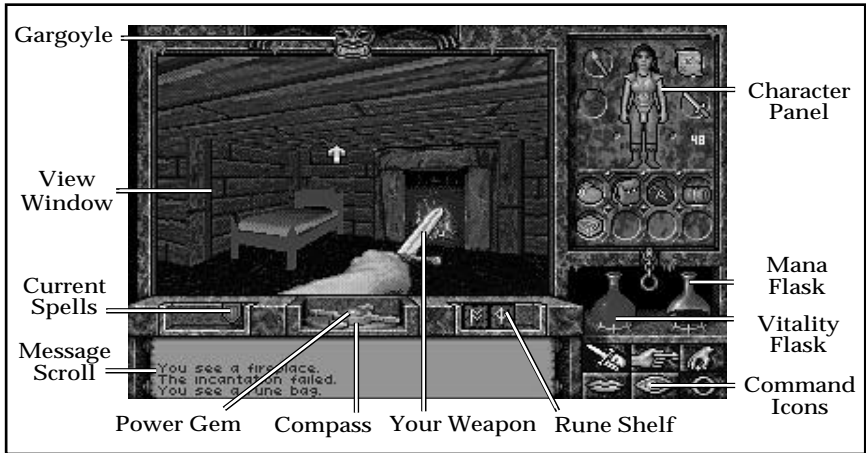


# TUTORIAL WALKTHROUGH: IN THE CASTLE OF LORD BRITISH

*NOTE: This tutorial walks you through the beginning of your adventure. It assumes you have a mouse. To play without a mouse, consult your Reference Card for keyboard or joystick equivalents of the commands described. If you want to pause the game at any time, press F6. To return to the game, press F6 again.*

Once you finish designing your character, you automatically begin the game. (If you have previously played *Underworld II*, at this point you are given a choice of up to four different starting points — games you previously “saved.”)

**Main Game Screen.** This is the screen you will see most of the time. In the upper left is the View Window — the world as your character sees it. To the right of this is a Character Panel that usually displays a picture of your character and any items you are carrying. At the bottom of the screen is a Message Scroll where text is displayed. There are six Command Icons in the lower right corner of the screen, which allow you to look at and interact with creatures and objects you encounter. Other parts of the screen will be explained later.



Try moving your mouse around the screen — but don't press any buttons yet. As you move the mouse in the View Window, the mouse cursor assumes arrow shapes corresponding to its position in the window. When you move the cursor outside the View Window, it takes the form of a silver cross.

## SAVING YOUR CHARACTER

Before you do anything else, save the game. If your character dies before you have saved the game, he or she will be lost, and you will need to go through the character creation process again.

1. Click on the “O” icon (for “Options”) in the lower right corner of the screen.
2. When the option list appears in the upper right, click on “Save.”
3. Click on the Arabic numeral “1” icon.
4. When the words “<not used yet>” appear in the Message Scroll, type in a name for your saved game (for now, something like “Start”). You are now ready to begin exploring.

## YOUR HEALTH AND WELL-BEING

At this point, you may obtain some elementary facts about your own state of being. For example, as time passes, you will grow hungry and tired. To learn your condition, get a status report. To do this, move the cursor until it is over the compass (below the View Window), and then click either mouse-button. Your status appears on the Message Scroll.

At the start of the game, the message reads something like this:

“You are currently well fed and awake.

You guess that it is currently dawn.”

Being “well fed” means that you are not hungry; therefore, you don’t need to eat anything right away. The last sentences give you an idea of what time it is. Later in the game, your compass may offer you additional information as to your current location.

**Eating and Sleeping.** If the message tells you your character is hungry or tired, you should consider eating or sleeping. When you sleep, you regain lost Vitality and Mana points. However, if you sleep on an empty stomach, your rest will be uneasy and you will recover fewer points. Therefore, it is wise to check your condition before sleeping — and if you are hungry, eat something (“Use” a piece of food in your inventory). You will also sleep poorly if too close to the lairs of beasts, and they might surprise you in your sleep.

To sleep, press F10 — or better yet, Use a bed, like the one in the southwest corner of the room, or a bedroll (your sleep will be more restful).

(Extinguish light sources when you go to sleep — otherwise, they’ll burn out and be useless to you when you awaken. Remember that some spells fade after a time and will have to be re-cast when you wake up.)

**Vitality and Mana Flasks.** To determine your current Vitality (physical health) and Mana (magical energy), check the score on your Statistics Panel (see p. 20) or click on the flasks on the right, below the Character Panel portion of the screen. One flask holds a red fluid — the amount of fluid in the flask represents the fraction of your full Vitality that you currently possess. At the start of the game, the red flask is full; if you fight a battle and lose half your Vitality points, the red flask will then show half-full. The flask with blue liquid serves the same purpose, except that it is a measure of how much Mana you have. Clicking (either button) on either flask will cause the Message Scroll to display the exact number of points you have remaining.

The flasks are important for another reason — if you are poisoned, the Vitality flask changes from red to bright green. This might happen if you eat something bad for you, are struck by a poisoned weapon, drink a poison potion, or receive a bite from a diseased animal, among other things. Being poisoned gradually saps your Vitality, so you want to take care of it quickly. One solution is to find an antidote potion, but the resourceful adventurer can find other solutions, as well.

## LOOKING AROUND

First, examine your surroundings. Move the cursor into the View Window, and notice again how the shape of the arrow changes depending on where it is. Near the middle of the screen, the arrow changes into cross-hairs. Moving to the right makes the arrow point to the right; moving to the left makes the arrow point left.

In the View Window, the shape of the arrow controls which direction your character moves. To move, click-and-hold the left mouse-button. Your character moves as long as you hold the button down.

For instance, move the arrow to the right side of the screen, then move it up or down until the arrow bends and nearly forms a circle — this allows you to turn in place, without moving forward or backward. With your cursor in this position, press and hold the left mouse-button (left-click-and-hold).

The view in the window shows what you see as you turn around. If you're just starting a game, you see a room with wooden walls, a door on the east wall, and a fireplace to the south.

As you spin around, note that the compass below the View Window spins too. The compass shows which direction you are facing; the silver-tipped point of the compass indicates north.

## MANEUVERING

Now you're ready to try moving around. Two rules govern movement:

Rule 1. While your cursor is inside the View Window, its shape determines the direction in which you move if you left-click-and-hold the mouse-button. If it points right, you'll move to the right; if it points upward, you'll move forward, and so forth.

Rule 2. The speed at which you move depends on how far your cursor is from the center of the View Window. When the cursor is exactly centered, it changes into a cross and you don't move at all. As you move the cursor closer to any edge of the View Window, you move faster.

Try right-clicking while you're moving forward — this causes you to jump. The faster you're moving, the farther you jump. J will cause you to jump in a similar fashion, while Shift J will make your character perform a standing long jump.

Don't worry if you run into a wall — you can't hurt yourself by walking or running into walls. However, flying (or jumping) into a wall *can* cause injury.



## INTERACTING WITH THE WORLD

When you can reliably maneuver about the room you are in, you will want to start paying attention to the objects you see around you. Initially, you will probably want to use the Command Icons for interaction with such objects. Clockwise from the upper left, these icons represent:



Options



Talk



Get



Look



Fight



Use

Selecting these various icons (only one of which can be active at a time) allows your right mouse-button to perform different tasks. We'll address each of these as the need arises. (For an explanation of the "Options" icon, see pages 18-19.)

Useful tip: The icons are easy to use and give you a good understanding of the way *ULTIMA Underworld II* works, but if you are an experienced game-player and mouse-user, you can access many commands without using the icons. If none of the icons is highlighted, you enter a very useful shortcut mode called "Quick mode."

However, if you're just learning to play *ULTIMA Underworld II*, we recommend using the icons for a while (and this tutorial assumes you will do so). Eventually, however, perhaps even before you complete this tutorial, you will want to try the icon-less quick interface. For an explanation of Quick mode, see page 18.

### Looking at Things

Stand in the center of the room, and turn to the southwest, so that the blue bottle is on your screen. Click on the Look icon with either button, then move the cursor over the bottle, and right-click. (Don't press the left mouse-button — that will cause your character to move.) Right-clicking in Look mode causes your character to "look" at an object — what you see is printed on the Message Scroll. Turn until you see the bright blue bottle on your screen and Look at it. The words on your Message Scroll read, "You see a bottle of water."

Looking Up and Down. You might wish to look down toward your feet, to see things like the rug you're standing on. It may be hard to see what is on the floor, unless you tilt your character's head down. To do this, press 1 at the top of your keyboard (in *ULTIMA Underworld II* the right-side keypad numbers have a separate function) — each time you press this key, your character's head tilts a little further downward, until it finally reaches its maximum. To look up again, you can either press 3 (which lets you look up a little more every time it is pressed) or 2 (which returns your head to looking straight ahead).

(Note that 1,2 and 3 on the numeric keypad control cursor movement and do not cause your character to look up or down.)

Occasionally, looking at or using objects calls up a scene that temporarily replaces the View Window. The scene will last as long as you continue holding the mouse button down. When you're finished looking at one of these scenes, release the mouse button, or press Enter to return to the View Window.

## Getting Things

Now, pick up the bottle and place it in one of your eight inventory circles. First, make sure that the inventory side of your Character Panel is displayed. This is the side with your character's picture on it. (If this picture isn't visible, click either button on the chain below the right-hand panel.)

The circles at the bottom of the Character Panel are for inventory — objects your character is carrying but which aren't necessarily ready for immediate use. The circles surrounding the picture of your character, the ready-at-hand circles, are for objects your character is wearing or holding — armor, weapons, lit torches and so forth.

To pick up the bottle, change to Get mode by clicking either button on the Get icon (the hand grasping an object) and move your cursor until it is on the bottle. (Look down, using 1, if you have trouble seeing it.) Right-click-and-hold, and move the mouse. You now have the bottle "in hand." An image of the bottle replaces the cursor, and as long as you keep the right mouse-button pressed, the bottle moves around the screen as you move the mouse.

Move the bottle over to one of the empty circles at the bottom of your Character Panel. Release the right mouse-button and the bottle settles into place.

Manipulating Your Inventory. To drink from the bottle, left-click on it. The bottle empties, and a message informs you of the water's effects.

You can try this again with the piece of paper in the room. Later on, you should do what Lord British suggests in his note, but first, we have more work to do.

Now pick up the bag in the northeast corner of the room, and place it in your inventory. Left-clicking on the bag opens it, and your Inventory Panel now displays the contents of the bag. If you don't recognize any of the items, you can find out what they are by Looking at them. To do so, click either button on the "Look" icon, then move the cursor over the object you want to identify. For example move the cursor over the object that looks like a stick and right-click — the Message Scroll now reads "You see a somewhat used torch."

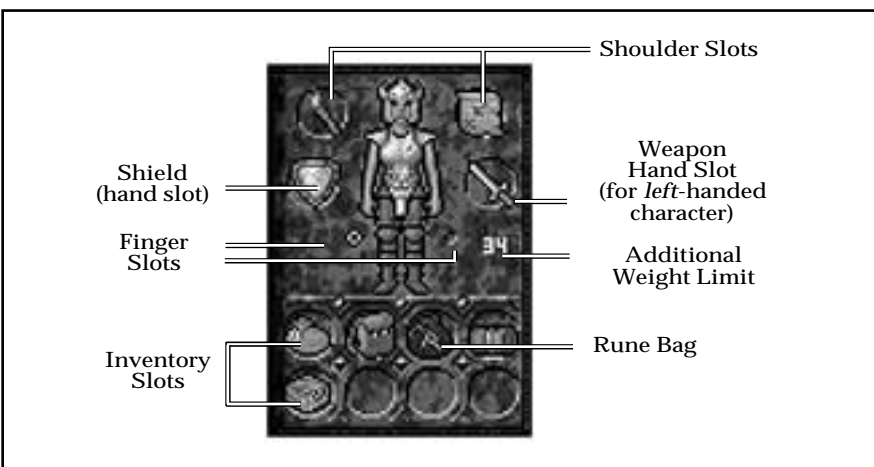
Looking at an object may tell you the nature and condition of the item you are looking at. Right-clicking on the sword-like object in the bag, for instance, reveals that it is a dagger, and that it is in "badly worn" condition. At the



moment, it is the only weapon you have, so you should place it in your weapon hand, just in case. If your character is right-handed, your weapon hand is your right hand — otherwise, it is your left hand. (Note that your character’s right hand is *not* the hand at the right of the screen, but the *figure’s* right hand.)

To move the dagger from the bag in your inventory to your weapon hand, place the cursor on the dagger, right-click-and-hold on it, and drag it to the inventory circle nearest your weapon hand. When you release the button, the object will settle into place.

Note that your left mouse-button will not pick up items in inventory — this avoids any confusion when you are attempting to Use an item, but do not wish to pick it up.



Perhaps the most important item in the bag is the square parchment, which a Look will tell you is a map. The game automatically updates this map as you move about. Place the cursor on the parchment and left-click — a full-screen map appears.

Auto-Map. At the moment, your auto-map displays a map of the ground floor of Lord British’s castle, sketched in brown ink. Your position is noted by the yellow pushpin, and the cursor is a quill pen. Writing on the map tells you where some of the important places are. If you want, you can write notes to yourself directly on this map.

For instance, mark your starting location for future reference: Move the quill-pen cursor to your current location on the map and press either mouse button. The quill pen shifts into writing position — whatever you type now will be added to the map. (Try typing “START.”) When you are done with the comment, click either mouse button (or press either Enter or Esc) to return the quill pen to its non-writing position.

To erase a remark, click either button on the eraser symbol. This turns your cursor into an eraser. Move the eraser to the comment and left-click. The comment goes away.

To call up maps of levels other than the first, click on the dog-eared corners on the right-hand side of the map. The upper corner allows you to examine higher levels, while the lower corner allows you to examine deeper levels. Since you haven't explored any levels other than the first yet, those other levels are blank.

To return from the map to the game, press Esc or move your cursor to the "Close" symbol at the lower right, and click either mouse button.

You'll want to use the map often, so you shouldn't keep it inside a bag. Right-click on the map symbol on your Character Panel, drag it to the bag symbol above the lower inventory circles, and release the button. (This takes the map out of the bag, but keeps it on your person.) Now left-click the bag symbol to close the bag and return to the main inventory screen. The closed bag and the map should be side-by-side.

In the later stages of the game, your character might become lost or disoriented, at which point the pushpin marking your character's position on the map will disappear, and the auto-map will no longer record your progress. Once you find your way back to territory you have already mapped, your pushpin will reappear, and the auto-mapping function will resume.

(Note that if you had all your inventory slots full, dragging the map to the bag symbol to take it out of the bag would have had no effect — to move the map out of the bag, you would have had to empty an inventory slot to make room for it.) Now that it is out of the bag, you can click on the map any time you want to get a fix on your location.

**Dropping Objects.** Now, you know how to pick things up and manipulate your inventory, but what if you want to get rid of something? For instance, how about the empty glass bottle that held the water you drank?

To drop the bottle on the floor, first pick it up out of your inventory, by right-click-and-holding on it, then drag it from its position. Move the image of the bottle anywhere in the bottom third of the View Window, and then release the button.

To throw the bottle, release the button while the bottle is in the top two-thirds of the View Window. If there is an obstacle in front of you, a thrown object is placed on the ground in front of you.

If you're too close to an obstacle (the wall, for example), you may not be able to drop the bottle at all. Any time you find you are unable to drop or throw an object because you are too close to a wall or door, try backing up a bit.

## **Wearing Things**

The Avatar's quarters also contain a pair of boots, tailored right to your size.

To don an article of clothing or piece of armor, click on the Get Icon with either button, then right-click-and-hold on the item. Drag it and release it over the appropriate part of your character's picture on the Inventory Panel — in addition to the inventory circles surrounding the picture (which represent things your character holds), the picture itself includes inventory slots for items you wear on your head, body, hands, legs and feet. Select the Get icon and then right-click-and-drag the boots onto the picture's bare feet. When you release the mouse-button, the boots settle into place there — your character is then wearing them.

## **Opening Doors**

Turn until you are facing east (i.e., until the silver-tipped arrow on the compass is in the 9 o'clock position), then click on the Use icon. Approach the door which is recessed in the east wall, and right-click on it. If you are too far away, approach closer. If you are near enough, it will swing gently open. Right-clicking on it again will close it, unless you are standing close enough to block its movement. However, do not be so eager to leave your room — there is more to see!

Approach the north wall of your room, and click on the Look icon. Move the cursor to the center of the north wall, and right-click on the wall. The Message Scroll may say, "You see a wood paneled wall," but if you have hit the right spot, it will say, "You see a secret door." If you do not find this right away, keep trying — the door is in the center section of the north wall of this room, but it is well-hidden! When you have found it, click either button on the Use icon, and then right-click on the secret door. It will swing open, revealing a hidden room!

Go inside and have a look around. Here is where Lord British has stored some adventuring equipment for your use. In particular, you might recognize a rune-bag made for you by Nystul, similar to the one you once used in the Great Stygian Abyss. Pick up items that interest you and move them into your inventory. You will probably want all of the items you find here, but the choice, as always, is yours.

## **Selecting Weapons**

Now you have a decision to make — should you leave the dagger in your hand, or move that out of the ready position and replace it with one of the weapons in this room? To make this decision, you need to know more about your skills. Click either button on the chain below the Character Panel and the panel flips around to your Statistics Panel.

This panel contains a great deal of information about your character, but right now we're concerned with the skill list at the bottom. To scroll through the list, click either button on the up- or down-arrow.

You will see skill scores for your character with various weapons — sword, mace, axe and barehanded. You will probably want to ready the weapon with which you fight most skillfully (the one in which you have the highest score), or, if you are skilled in barehanded combat, you may want to fight with no active weapons.

Now click either button on the chain below the Statistics Panel to flip back to the Character Panel. Move whichever weapon you want (if any) into your character's weapon hand.

## Dealing with Grouped Items

If the pack you saw in the secret room to the north of your quarters isn't in your inventory, retrieve it now. In the pack, you will find a variety of items, including a torch with a small white number next to it.

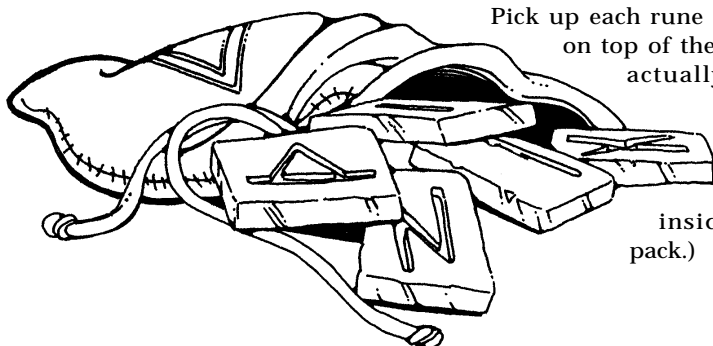
When you try to pick up the torch you'll find that there's something different about it — it's actually *several* torches! When you click either button on the Get icon and then try to right-click-and-drag the torch, the message "Move how many? 1" appears in the Message Scroll. To take one of the torches, left-click on the torch symbol. To take all the items in the group, right-click on the torch symbol. To take more than one but less than all of them, type in a number from the keyboard, then press Enter. You can move the torch(es) you have chosen just as you would move any other object.

Items of the same type can usually be stacked within a single circle on your inventory panel — for instance, five torches are generally shown as one torch symbol, with the numeral "5" above it. The only time you can't stack "identical" objects is if their "quality" is different. For instance, you can't stack a "somewhat used" candle in the same circle with "halfway used" candles.

## FURTHER EXPLORATION

There are several other interesting items in this room, including a gray bag (your rune bag), with some brown and gold stones near it. These are rune stones — the stuff of magic. Pick these up and put them in your inventory.

The magic items are very important. The rune bag allows you to cast magic, but only if you have the proper rune stones inside.



Pick up each rune stone and drag it on top of the rune bag — this actually puts the stone inside the bag. (You can use this method to place anything inside of any bag or pack.)

## MAGIC

With a rune bag and some rune stones, you may be able to cast spells, even if you aren't a mage. The amount of Mana you have and your *casting* skill level determine how successful you can be with magic.

**Preparing a Spell.** Before you can cast a spell, you must prepare it. Try to anticipate your needs and have a spell (like *Resist Blows*) ready for use in an emergency or keep a common spell (perhaps *Light*) ready simply because you expect to use it repeatedly.

To prepare a spell, open your rune bag. Go to the inventory section of your Character Panel, and left-click on the rune bag — this causes the Character Panel to slide away, revealing the Rune Panel. Rune stones are shown here in alphabetical order, with empty squares representing stones you haven't yet collected.

Now take note of the empty rectangle just to the right of the compass — this is the Rune Shelf, where your readied spell is displayed. Left-clicking on any stone on the Rune Panel causes that stone to appear on the shelf. When all of the stones necessary to cast a spell are on the Rune Shelf, in their correct order, the spell has been prepared.

The shelf to the left of your compass displays icons representing spells that you have already cast and are currently active.

**Necessary Rune Stones.** The rune stones you find in the secret room are *Bet*, *In*, *Jux*, *Ort* and *Sanct* (B, I, J, O and S). The spell tables on pp. 30-32 reveal that these stones can be used to cast several spells, including *Luck* (B, O and I), *Magic Arrow* (O and J) and *Resist Blows* (B, I and S).

**Casting a Spell.** All that is necessary to cast a prepared spell is to click on a set of runes on the Rune Shelf, regardless of whether your rune bag is open or closed. If you have the required Mana, and the correct runes on the shelf, the spell will eventually work — but your chance of success each time depends on your character's *casting* skill level, as well as the Circle of the spell being cast. The higher your level, the better your chance of succeeding at a spell. Characters with lower *casting* ratings may have to try over and over in order to get a spell to work. Fortunately, there is no penalty for a casting failure unless the spell backfires — a rare occurrence.

If you make a mistake or want to try casting a different spell, you can erase the Rune Shelf by clicking either button on the symbol at the bottom of the Rune Panel. This represents the rune stones being replaced in the rune bag. In fact, even if you've properly arranged a set of rune stones on the shelf, you can remove them any time before casting the spell, by clicking on the symbol.

Once a spell is successfully cast, the Blue Flask drains to reflect the amount of Mana used up.

## COMBAT

Now stand in the center of the room and turn to the north. There's a door in an alcove on the north wall, and also a small lever like a light-switch to the left of the door. Right-click on the Use icon, move the mouse cursor to the lever, then right-click again. The lever changes position, and the door opens, courtesy of Lord British's finest engineers.

Move north, through the door and out into the corridor. Notice that it is dark here. Now would be a good time to use the torch you found earlier.

You already know how to move items within your inventory, so move the torch to the circle above your character's right shoulder. Now you want to light it. Click on the Use icon and then on the torch. Notice the difference this makes in the View Window. (If you Use a *lit* torch, you snuff it out.) As a shortcut, left-clicking on a torch or lantern anywhere in your inventory will automatically light it and place it in one of the four ready-at-hand circles, if any of these are empty.

Now that you can see, you'd better look to your left, quickly! A giant rat sits there (probably having just crept up from the sewers beneath the castle). It's currently "upset" (according to the message on the scroll) — on the alert for danger but not actively hostile, so it won't come after you immediately. Well, in the interest of keeping the castle free of dangerous vermin, and finding out what combat is like in *Underworld II*, you'd better exterminate this rat at once.

First, make sure you have your best weapon readied — the one in the best condition and with which you have the highest level of skill — then click on the Fight icon (the sword) in the lower right corner of the screen. This readies your weapon. The tip of the weapon appears at the bottom of your View Window.

*(If your weapon does not come into view, and you see your fist instead, you may not have the weapon in your weapon hand. The large circles near your hands, on the Inventory Panel, are the only places from which you can use a weapon — the circle to the left if your character is right-handed, and the right circle if your character is left-handed.)*

Attacking. To attack, position the cursor over your target, then right-click-and-hold. This causes your weapon to disappear from the View Window as you pull it back into the ready position. Releasing the button launches the blow. The location you're attacking is determined by where you *start* your attack — where you first place the cursor — not by where you release the mouse button to unleash the attack.

Be sure to hold down the right mouse-button long enough for the Power Gem in the center of the compass to begin glowing green — otherwise, you haven't drawn your arm back yet, and the blow is automatically aborted.

You will quickly notice that you can make several different kinds of attack — positioning the cursor high in the View Window causes a *bash*, starting the

attack in the middle of the window causes a *slash*, and a low cursor unleashes a *thrust*. Some attacks prove more effective against certain foes — in this case, you're fighting a rat, and you want to swing middle or thrust low (or look down and bash), as high swings go over the rat's head.

If the rat dodges, maneuver to keep it in view, using the left mouse-button as you would during normal movement. (You can move and attack simultaneously.) You might also want to look down (with 1).

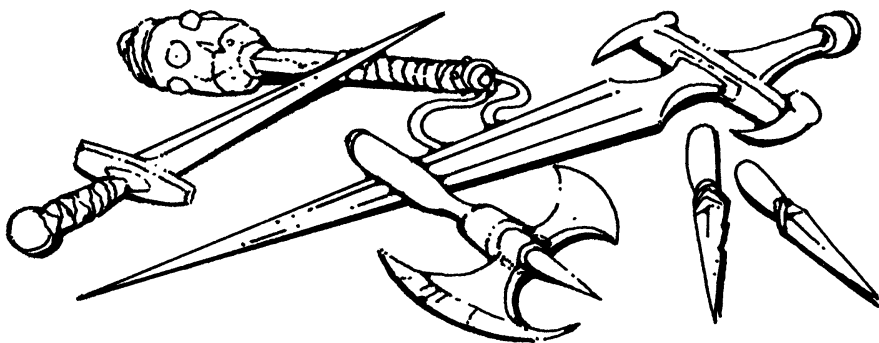
**Doing Damage (and Taking It).** If your attack is successful, you will see a splatter of blood — the bigger the splatter, the more damage you did to your foe. (Not all enemies bleed, but giant rats do — if your attack strikes home, you'll know it.) If you're lucky, or if your character is particularly skilled in *attack* or with the weapon you are using, you might even kill the rat with a single blow — if so, you'll see the rat collapse, leaving a puddle of blood on the ground.

You will know if the rat injures you, because the View Window rocks (as the rat's attack knocks you back). If the attack seriously damages you, a sudden flash of red fills the entire window. To keep track of your health during combat, watch the Red Flask — if its level falls too low, this may be a good time to run for it!

If you defeat the rat, check your Character Panel — you will find that you've been given several experience points. When you have more, your character will grow in skills and abilities (this is not automatic — see *Improving Skills*, page 21.)

**Collecting Booty.** If you vanquish an enemy, his or her goods — weapons, armor and other treasures — automatically fall to the ground, and you can claim them. Unfortunately, this rat has no treasure. It is, after all, just a rat.

**And Should You Die ...** If your character is killed in the castle, he or she is dead, and you will have to restore a saved game or create a new character. However, if your character is killed on an alternate world or another dimension, he or she will wake up, somewhat battered, near his or her point of departure from Britannia.



## CONVERSATION

Now that you've sampled combat, try a little peaceful interaction. Return to your bedroom (the room with the fireplace), open the door on the east wall, and walk out into the corridor. Turn right and proceed south to the "T" intersection, where you should take a left. In a few moments, you will be in Lord British's splendid throne room, where all those trapped in the castle have gathered. Now turn left, and walk down the center aisle toward the throne. When you are close enough for him to speak, Lord British will address you and the other castle inhabitants. Before addressing you, most characters will wait for you to speak to them (by clicking either button on the "Talk" icon, then right-clicking on the character), but right now Lord British has something important to say.

**Conversation Screen.** When you engage in conversation, a large scroll — the Conversation Scroll — appears in the middle of the screen. Below the Conversation Scroll is your Message Scroll. Above and to the left of the Conversation Scroll is a portrait of the person with whom you are speaking — in this case, Lord British. To the right of Lord British's portrait is his "Barter Area," and below that, his name. To the right of that is *your* Barter Area and character portrait.

**Selecting Responses.** Lord British greets you with the words, "Greetings, Avatar. Shall we begin the meeting?" (His comments are printed in dark brown on the Conversation Scroll.) Below, on your Message Scroll, a menu of two possible responses appears:

1. By all means, my liege.
2. Not just yet. There is something I must attend to, first.

These are the things you can say to Lord British. The choice you make determines how Lord British feels about you (friendly, angry, actively hostile, etc.) and what he says next, if anything. To select one of these responses, press the number of the option you want or move the silver cursor onto the option and click either button. Select the option you want now.

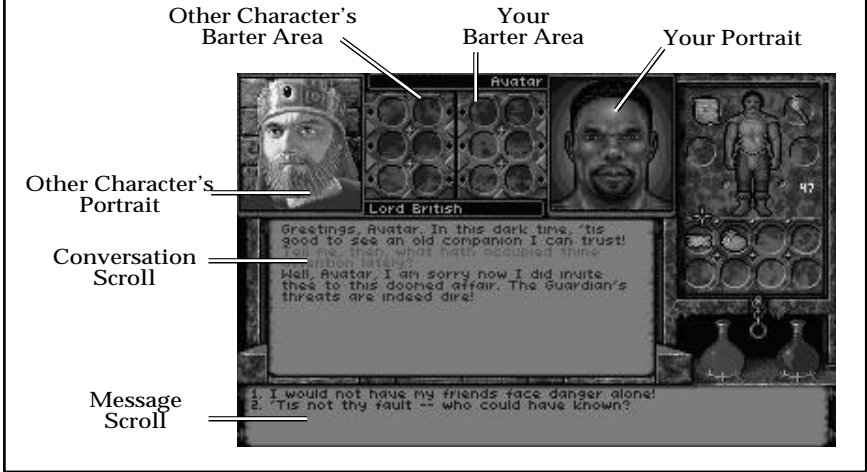
The response appears in light brown below Lord British's greeting, followed by his response to you. You mustn't mind if he's a bit brusque — he is carrying a great deal of responsibility for the realm, as are you. The "[MORE]" at the end of his comment is a signal that he has more to say — click either mouse button or press any key to see the rest of his conversation.

Lord British will now speak for a long time, since it is his responsibility to inform and organize Britannia's citizens in this crisis. Pay close attention to his words — Lord British is a wise man.





## CONVERSATION SCREEN



## CONTINUING TO PLAY

These pages have provided enough information to get you started. However, at some point, you should read Useful Playing Tips (below) for more information about this game.

For now, you can begin exploring the castle, and perhaps take a look downstairs in the basement and sewers, as well. The other castle members will do what they can, but they look to you to take the initiative. As Britannia's Avatar, you are in a unique position — you are expected to personify the qualities of virtue, courage and intelligence. Fate has placed you in the castle at this moment in time, and now the future of Britannia rests squarely on your shoulders.

As the game continues, make sure to consult often with your fellow Britanniains. They have many skills which they can impart to you, if you are ready to learn them. They may also have ideas about the current crisis — Nystul and Nelson are fine scholars, and their observations may make the difference between success and failure in your current enterprise.

Note that the sewers beneath the castle of Lord British are very dangerous — they are thousands of years old, and the evils that exist there have had plenty of time to prepare for your visit. Many of the sewers' perils are too difficult for beginning adventurers, and should not be attempted till later — don't try to clear each level before moving on to the next one. Instead, keep exploring downwards, looking for some clue to a weakness in the Guardian's spell.

If you want to stop playing for now, save and exit the game by selecting the Options icon, and then choosing the "Save Game" option followed by the "Quit Game" option. For information about saving your game, see page 19. If you don't save before exiting your progress to this point will be lost.

## USEFUL PLAYING TIPS

### PLAYING WITHOUT THE ICONS

In the tutorial above, you used the command icons to control the function of the right mouse-button and interact with the world. However, most functions in the game can be performed without using the icons at all — this takes a little getting used to, but makes game play much faster and more convenient. Any time none of the icons is highlighted, you are in Quick mode. (To “un-select” a highlighted icon, click either button on it.) In Quick mode, you can:

**Look.** To Look at a creature or object (whether in the View Window or in your inventory), right-click on the thing you want to examine. In Quick mode, you can tell what an object is, but no more. To search something carefully, you must click on the Look icon to enter Look mode.

**Get.** To Get an object in the View Window, place the cursor on the object, then right-click-and-drag the object wherever you want. The game detects whether an object is “get-able.” If the object is one you can’t get, right-dragging will generally try to Use it. If the object is “get-able,” it will be put in-hand, and you can throw it, drop it or move it into your inventory. In Quick mode the cursor is always arrow-shaped, so if you need to “get” a small item it may be more convenient to use the Get icon (giving you a cross-shaped cursor).

**Talk.** To Talk to someone or something, position the cursor on the person or creature and right-click-and-drag the mouse. The game detects whether the person or creature is interested in conversation. If so, the Conversation Screen appears (as described in the tutorial above) and you proceed normally. If the person or creature isn’t interested in conversation, you are informed of that fact and can proceed as you wish.

**Use.** To Use an object in your inventory, left-click it. To Use an object in the View Window, right-click-and-drag it. If the object is “usable,” you automatically Use it, as you would if you had clicked the Use icon. Note: in Quick mode, the Get command takes a higher priority than the Use command, so you can only Use objects you can’t Get (doors or levers, for instance).

**Fight.** To toggle in or out of Fight mode, left-click on the weapon in your Character Panel weapon hand.

### THE OPTIONS ICON

Quick mode allows you to do almost everything you will ever need to do within the game. However, to access the save or restore game features, toggle sound and music on or off, increase or decrease the level of graphic detail, or quit the game, you use the Options icon. (For a list of the keyboard equivalents of these options, consult your Reference Card).

When you click either button on the Options icon, boxes appear on the right side of your screen, replacing the character information panels usually found there. Text in the boxes describes what each box does. To select an option, click either button on the appropriate box.

**Save Game.** To save your game, click with either mouse button on the Options icon. Then click either button on the “Save Game” box, and new options will appear in boxes: 1, 2, 3 or 4. Each of these is a possible save-game, or bookmark, from which you can resume playing the game. The Message Scroll provides a description of each of the save-games. (The description for an unused saved game slot reads “<not used yet>.”)

Click either button on any numbered box (or a box representing a saved game you don’t mind replacing). Now the game asks you to type a description of this save-game. You want to enter something that will remind you what this bookmark stands for, and you can write as much as there is room for in the Message Scroll (about thirty characters). When you are done, click either button (or press Enter), and the process of saving your game will be complete.

**Restore Game.** During the course of play, your character may die or you may do something you wish you hadn’t. You may just want to pick up where you left off in an earlier play session. This can be accomplished by restoring the game to the point at which you saved it.

You do this by selecting the Options icon. Click either button on the “Restore Game” box, then click either button on the boxed number which matches the save-game you wish to restore. When the game is ready, a notice appears on the Message Scroll, and you can resume play by clicking either mouse button.

You can also restore a game from the main menu by selecting “Journey Onward” and then clicking on the saved game you wish to play.

**Music.** This toggles music on and off, but has no effect unless you installed the game with music.

**Sound.** This toggles sound effects on and off, but has no effect unless you installed the game with sound effects.

**Detail.** The level of graphic detail in *Underworld II* has a direct effect on game speed. If your game seems to be running too slowly, click on the Options icon and then on the “Detail” box. The default detail level is “Very High.” To speed up game play, decrease that to “High,” “Medium” or even “Low.” The game won’t look quite as good, but will run more smoothly — and faster. Experiment until you achieve a pleasing balance of speed and graphic detail.

**Return to Game.** When you click either button on the Options icon, the game pauses (combat stops, creatures freeze, time stops). When you want to exit the Options menu and restart the game, click either button on this box.

**Quit Game.** This returns you to DOS. Make sure you save your game before you do this, or anything you accomplished after your last save will be lost.

## YOUR CHARACTER

To the right of the View Window is your Character Panel. Generally, this displays a picture of your character surrounded by small circles. Each circle is a place you can store or carry an object.

**Encumbrance.** At the right center of the panel, look for the beige number. This number represents the weight (in stones) your character can carry. This weight-limit number changes when you pick up an object, to reflect the fact that you now are carrying something more.

The more you carry, the slower you move. Encumbrance also affects how far you can jump, how long you can swim before you begin to drown, and how likely you are to fall through ice.

If the weight-limit number ever reaches zero, then you are carrying your maximum load, and must drop something before picking up anything new.

**Statistics Panel.** Note the chain hanging from the bottom of the Character Panel. Move the cursor to the chain, then click either button. This causes the panel to slide and be replaced by the Statistics Panel (or to slide back when you click again). The side of the Character Panel which you are now viewing lists your character's statistics: his or her name, class and level, and other measurements which you previously saw when creating your character.

To become a more powerful character in the game — and thus, more capable in combat or with magic, for instance — you must accumulate EXP (experience points). These points are scored for exploring new territory, for slaying creatures which oppose you, and for accomplishing other difficult tasks. When you start, your EXP score is very low, but this will change as you play. And remember, no matter how much experience you accumulate, your basic strength, dexterity and intelligence will not change.

Two other important measurements are your VIT (Vitality, or overall health) and MANA (a measure of your magical energy — when you are out of Mana points, you can't cast spells). You can obtain a numerical measurement of your Vitality by clicking on the Red Flask on the right-hand side of the screen with either mouse button. To measure your Mana, click on the Blue Flask.

Both Vitality and Mana are represented by two numbers — the first is your current score, and the second is your maximum possible score at the present time. For example, if your Vitality score is 34/34, this means that you have 34 points out of 34 possible (in other words, you are in perfect health). As you advance in the game, your maximum VIT and MANA scores may increase. The 34/34 character described above may become a 44 maximum VIT character over time. In that case, a 44/44 would indicate full health, and a 34/44 would indicate that the character had taken some damage.

**Attributes.** The three primary measurements on every Character Panel are ST (your strength), DX (your dexterity or quickness) and IQ (how smart your character is). The maximum score for any attribute is 30, and the minimum (for player characters) is 12.

Each character class (fighter, mage, etc.) has its own starting level for each attribute. For example, the basic scores for a fighter are a high Strength, medium Dexterity and low Intelligence. In addition, each character class has its own advantages and disadvantages. Try creating characters of various classes to determine which combination of attributes and skills most suits you.

**Skills.** Each class comes with its own required skills (which you receive automatically) and optional skills (from which you may select a limited number).

## IMPROVING YOUR CHARACTER

Characters are not limited to the abilities with which they start the game — they may improve over time. All of this is controlled by experience points. You gain points for exploring new territory, slaying hostile creatures and performing heroic deeds. Points can be taken from you for less-than-heroic actions, such as betraying your friends.

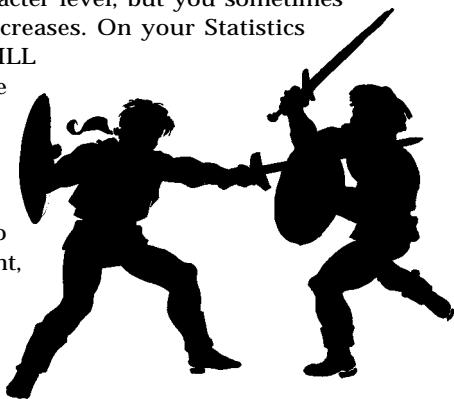
**Gaining Levels.** The most obvious way in which your character progresses is through gaining levels. At the start of the game, you are a first-level character. As you gain experience, however, you will rise to second level, third level, and beyond (to a maximum of 15th level).

As a higher-level character, you become harder to kill (your maximum Vitality rises) and you qualify to cast more powerful spells. Increases in character level are automatic with sufficient increase in experience points. Notice of a level increase appears on the Message Scroll.

**Improving Skills.** Another way in which you progress is through raising your skill scores. Such increases only come as the result of training, study and practice, so you must visit a trainer, a master of the skill you are seeking to learn. Some trainers offer general instruction in, say, a range of combat skills. Others focus on a particular art or craft.

Receiving training is not enough to improve a skill score — you must qualify for it by having accumulated at least one skill point. You always receive a skill point after you gain a new character level, but you sometimes receive skill points between level increases. On your Statistics

Panel, you will see a line labeled “SKILL PTS.” After you receive one or more skill points, you must decide how to “spend” the points you have earned, by deciding which skills you most want to improve and selecting among the trainers you know. You are able to improve one skill score per skill point, so spend your skill points carefully!



## MOVEMENT

**Jumping.** You climb stairs and mount objects up to two feet tall by walking onto them. To climb onto an object greater than two feet tall, you must jump (or fly).

To jump, right-click while holding the left mouse-button. If you click both mouse-buttons simultaneously, you will jump in place. To jump across a gaping chasm or over an obstacle, make sure you get a running start. Left-click-and-hold and move the cursor to the upper edge of the View Window. When you've built up speed (and you've reached the lip of the chasm), right-click and you'll leap forward. How far you jump is determined by your forward momentum when you right-click.

The keyboard offers a convenient method of jumping. Pressing J causes the Avatar to jump into the air, just as clicking the right mouse-button would. Shift J causes the character to jump some distance forward from a standing start.

As a player convenience, the game will not let you walk off a precipice if you are moving slowly — so if you really mean to jump off a cliff, move swiftly to the edge.

Note that you can't jump while in Fight mode, except by pressing J or Shift J.

**Swimming.** When you walk (or fall) into water you begin to swim. In *Underworld II*, swimming is similar to walking. However, you can't jump or attack while swimming. To leave the water, you must find the shore. When you reach a shore low enough to climb out onto, you automatically begin walking (or running) normally.

All characters can swim, but only for a limited time. (The actual amount of time is determined by your character's *swimming* skill and encumbrance level.) As your character tires and begins to sink, the screen blinks blue as you gradually drown. Your Vitality level will begin to drop and, when it reaches zero, your character dies.

If you drop an item into the water or onto lava, it will probably sink out of sight and you won't be able to retrieve it.

**Flying.** In addition to walking, running, jumping and swimming, you may learn to fly, either by casting the *Levitate* or *Fly* spells or by using a magic item that gives you a similar ability. Your direction of movement is determined by the position of the mouse in the View Window (or the standard keyboard movement keys). Movement up and down requires the use of the keyboard. To move up, press [E] until you reach your desired altitude. To move down or land, press [Q].

**Lava and Movement.** In some underground areas, you may find lava flows. Generally, it is best to leap across molten lava if you want to cross it. You can walk on lava, but you take damage while doing so.

## INVENTORY

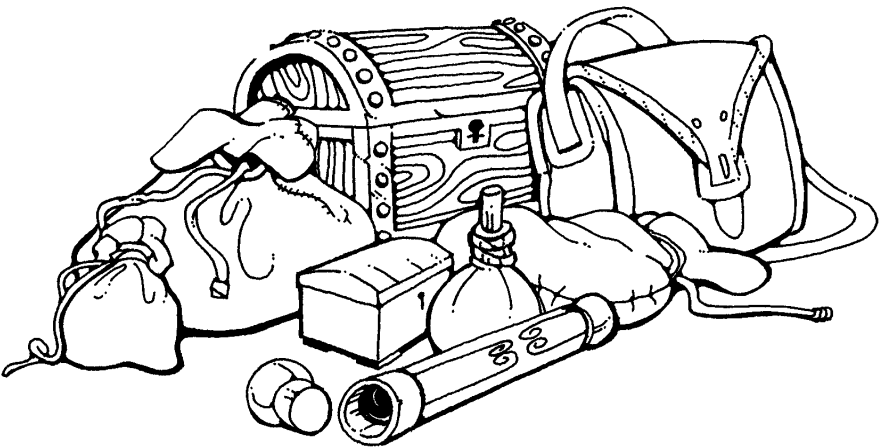
**Finger Slots.** Notice the two small inventory circles near your character's hands. These are the finger inventory slots. One ring can be readied in each of these positions. Magical rings are only effective when worn (i.e., when they are readied in a finger slot).

**Four Upper Circles.** Of the four upper circles, only the one near your primary hand can be used for your weapon. Only the one near your "off" hand can be used for a shield. The other two, your "shoulder" slots, are good places to put torches or other items you want to carry around while keeping a weapon ready.

If one of the top four circles is empty and a torch is in one of the lower circles, right-clicking to Use the torch automatically lights it and moves it to an upper slot.

**Combining Objects.** In general, it is not possible to combine objects of different types. However, it is sometimes possible to make a new object by dragging the object in hand to an object in your inventory and dropping it there. (For instance, you can drop an ear of corn onto a torch to make popcorn.)

**Containers.** Keep the bags and packs that you find, since you can use them to keep your goods organized. A typical adventurer might carry six or more bags, including a food bag, a bag of items for barter, a bag of torches and candles, and (of course) a rune bag. In the course of the game, you may find items, such as a key-ring, whose purpose is to hold a specific type of object. You can also place bags inside of other bags. To take an item out of your bag but keep it in your inventory, drag it to the symbol of the opened bag. (Note that you can't take rune stones out of your rune bag, but the game never requires you to do so.)



# COMBAT

Aspects of An Attack. Every time you attack, you must make three choices: where to aim, the type of attack and the strength of the attack.

*Aiming.* To aim, place the cursor on the creature or object you wish to attack. It is not necessary to pin-point a specific part of your foe — just pointing at his or her body is generally good enough for the purposes of this game.

*Attack Types.* Only one type of barehanded attack exists — the jab. Similarly, there is only one form of attack for each missile weapon (bow, sling, etc.). Other weapons — swords, daggers, maces and so on — can be used in a variety of ways. You determine the type of attack you make by where the cursor is located when you first right-click.

If you start in the top third of the screen, your attack will be an overhead *bash*. Pressing in the middle third of the screen will begin a sideways *slash*, and pressing while in the bottom third will cause a *thrust*. The three forms of attack inflict different amounts of damage, depending on the weapon being used and its appropriateness to that sort of attack.

*Attack Strengths.* The Power Gem on the screen, in the center of the compass below the View Window, indicates the strength of your attack. When you right-click to begin an attack, the gem turns dark green while you pull your weapon back. If you release the button while the gem is still dark green your attack is aborted. After the weapon is pulled back, the gem begins brightening to represent more physical strength being put into the attack. When the gem is pulsing a bright green, your attack is at maximum strength. The longer you prepare an attack, the more damage it does if it hits its target.

Your Foe's Condition. This is indicated by the gargoyle at the top of the View Window. When you hit a creature in combat, glance at the gargoyle's eyes. If they glow green, your opponent is still in good shape. If they glow yellow, the target is injured, and if the eyes glow red, the target is hurt badly.

Missile Weapons. Bows and similar weapons work differently than other weapons. Ready a missile weapon by placing it in your weapon hand on the Inventory Panel (making sure you have the appropriate type of ammunition in your inventory). If you don't have the right type of projectile for the weapon, you can't attack. Bows use *arrows*, crossbows use *bolts*, and slings use *rocks*.

Right-click in Combat mode to initiate an attack (screen location doesn't matter), then wait for the gem to glow green. When it is glowing, your bow is ready to shoot — unlike other attacks, there is no bonus for delaying your missile-weapon shot further. A red, circular cursor appears. Move the cursor to your target, and release the mouse-button to unleash the attack. (Remember you have to lead a moving target ...)

After combat, you may be able to recover projectiles which missed the target.



Attacking Inanimate Objects. In general, inanimate objects are not worth attacking — you can't do much damage to stone walls. However, some objects *can* be affected by attack — you can sometimes bash open locked chests and batter down locked doors, for example. This is time consuming and may damage (or destroy) your weapon, but if you lack a crucial key or don't feel like taking the time to find one, it may be worth your while.

## WEAPONS AND ARMOR

To make the most of combat, you must understand the benefits and drawbacks of the various weapons and armor types. You should also pay attention to the condition of your equipment. The more damage your weapon has taken, the likelier it is to break.

Weapon Types. There are four weapon types. Larger weapons usually do more damage, but take longer to ready between blows than smaller weapons.

*Swords.* Includes *daggers*, *short swords*, *longswords* and *broadswords*. Daggers can be readied swiftly, but do only light damage. Daggers are best used as thrusting weapons, while other swords excel at slashing.

*Axes.* Includes *hand axes*, *pole axes* and *battle axes*. Axes do more damage than swords, but take longer to ready. They are slashing weapons — only the pole axe is effective when thrusting, and no axe can bash very well. The battle axe is the most damaging weapon (excluding enchanted or special weapons).

*Maces.* Includes *cudgels*, *light maces* and *maces*, all best used by bashing.

*Missile Weapons.* Includes *slings*, *bows* and *crossbows*. Missile weapons allow you to attack most creatures before they can attack you. The problem is that each shot requires ammunition, and it can be hard to find arrows (for bows) or bolts (for crossbows). Slings fire rocks, which are slow, easy to dodge and don't do much damage ... but rocks are easy to find. (You can always make more rocks by using a rock hammer to break a boulder.)

Armor. There are three types of armor: *leather* (the least protection), *chain* and *plate*. As you find various pieces of armor, you might soon be wearing several kinds (leather leggings, a chain shirt and a plate helm, perhaps).

Armor degrades in quality as it suffers damage through combat, and eventually is destroyed (unless you repair it yourself, using an anvil). Also, note that armor provides less protection as it deteriorates. Keep armor in good repair whenever possible.

Armor is also heavy — a complete set of plate armor may be too heavy for you to wear, especially if you want to carry much with you!

Shields. Shields are only effective when carried in the hand opposite your weapon hand — if your character is right-handed, the shield must go in the inventory circle by the left hand. From least to most protective (and lightest to heaviest), the shields are: *buckler*, *small shield*, *wooden shield* and *tower shield*.

## CONVERSATION

Many of the people and creatures you meet have tales to tell. Listening to them and helping them with their problems are important parts of the game.

Unless a person or creature seems obviously hostile, it is always in your best interest to try to engage him, her or it in conversation — attacking everything in sight will lead to failure in your mission and, in many cases, quick death.

You may hold conversations with certain people or creatures. You can talk to most of the humanoid inhabitants. In general, you cannot speak to someone who is fighting you, but there are exceptions.

Characters often react to and remember how you treat them in a conversation. Intimidation may work on some, but may anger others. An angry creature may attack you, if not now, then later.

In some conversations, you will see the response “Other,” “What about ...” or something similar. This gives you the option of typing in a specific name, word or phrase.

Bartering. Some people have equipment and food they are willing to part with in exchange for things they need — bartering is an important ability, one you will want to hone as you explore new places. Sometimes in a conversation a character may ask to see items or you may want to show items. This is what the Barter Areas are for. The Barter Areas look just like normal inventory slots. If you want the other character to see an item you wish to trade, you must put it in one of the circles in your Barter Area.

Placing an item in the Barter Area automatically lights the dot next to the item. A lit dot indicates an item that is available for trade. Clicking either button on the item toggles the lit dot off, removing the item from consideration in a trade. No character can see what another has in his or her inventory. Put an item or items in your Barter Area and the other character will see it.

Either you or another character may initiate a barter session. When this occurs a number of items that the character is offering to trade will appear in his Barter Area. You may move any items you wish to trade into your Barter Area. Then, click either button on the items you want to trade for in the other Barter Area to light their dots, and do the same for the items you are offering to trade them for in your Barter Area. You can then offer this deal to the character by clicking either button on a menu line that says something like “I offer you this trade.”

If he accepts your deal, the items you offered will disappear into his inventory, along with any items of his you did not bargain for. You may move the items you traded for from his Barter Area into your inventory. If he declines, you may change the highlighted items in either Barter Area.

The same procedure is used to give or show items. For example, you may want to offer someone a gift. To do this, you must have a highlighted item in your Barter Area. When you click either button on a menu line like “I wish to give you this gift,” the character will take the item from your Barter Area. When a character decides to give you something, the item will appear on your cursor. You should place it into your inventory.

Some characters are patient with bartering. Others lose interest quickly and may tire of it after a few unsuccessful offers. They also may require more profit for themselves before accepting a deal. Some may have different ideas about the values of items than you do. To avoid making bad offers, or getting a really bad deal, you may wish to evaluate the relative values of the items being offered to see if you are getting a good deal or not. To do this, click on a line that says something like “I must think about this deal.” A line evaluating the deal will appear in the Message Scroll. For instance, you may see the words, “You think you are getting a good deal.” The accuracy of the evaluation depends upon your *appraise* skill.

One final option in bartering is to simply demand items from the character. Once the character has agreed to barter and you can see what he is carrying, you may demand that he give you certain items. This is a very hostile act. Even if he agrees to give you the items, his attitude toward you will worsen. If the creature thinks he is stronger than you, he will refuse, and he will attack you. You must be very careful of whom you demand things.

To end a conversation or bartering session, you must say “farewell” (or the equivalent) by selecting it from your conversation options. Any items left in your Barter Area or in the other Barter Area that belong to you at the end of a conversation appear on the floor in front of you.

## REPAIRING ITEMS

You can try to repair damaged weapons or armor yourself, but you must first find an anvil. Success depends upon your *repair* skill level — it is possible to ruin something by attempting to repair it! Repairs also take time, and the noise can attract attention. To repair an item, Use the anvil as you would any item. Your cursor turns into a small anvil, which you then must right-click on the item you wish to repair. A message appears in the Message Scroll telling you how difficult the repair will be for you and asking if you want to continue. Select the “Yes” option, and you attempt to repair the item.



## MAGIC

**Successful Spellcasting.** In order to have any chance to cast a spell successfully, you must have sufficient Mana and you must be of high enough level.

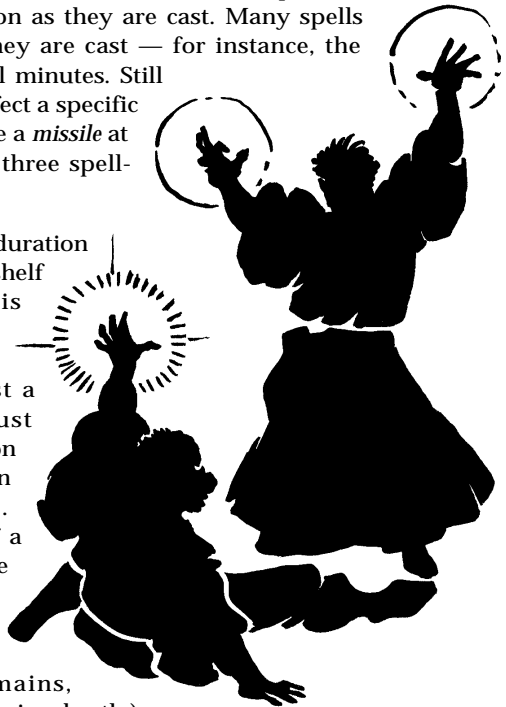
*Required Mana Level.* The cost of a spell, in Mana points, is equal to triple the level of the spell — for example, a spell of the First Circle costs 3 Mana points to cast. Your character's current Mana level is the first of the two numbers that follow "Mana" on the Character Panel. If you currently have at least 3 Mana points, you can cast a spell.

*Your Character Level.* To cast a spell, your character level, halved and rounded up, must equal or exceed the Circle of the spell. For example, to cast a spell of the Fourth Circle, you must be at least seventh level. If you successfully cast a spell, your level comes into play again — before you can cast another spell, you must wait an amount of time determined by your level and the level of the spell cast.

**Unsuccessful Spellcasting.** Whenever you cast a spell, there is a chance you will fail. In general, a failed attempt to cast a spell has no effect. You don't use up Mana points — you just waste some time. However, a failed spellcasting attempt *may* backfire (especially if your *casting* level is low). A backfire damages the caster.

**Spell Types.** Spells come in four varieties. Some spells are *instantaneous*, taking effect as soon as they are cast. Many spells last for a period of time after they are cast — for instance, the *duration* of a *Light* spell is several minutes. Still other spells must be *targeted* to affect a specific object on the screen, or hurled like a *missile* at a particular creature. These last three spell-types require a bit of explanation:

*Duration Spells.* When you cast a duration spell, its symbol appears on the shelf to the left of the compass. It is impossible to maintain more than three duration spells at the same time. If you want to cast a fourth duration spell, you must dispel one of the existing duration spells (by *left-clicking* its duration symbol on the left-hand shelf). *Right-clicking* on the symbol of a duration spell causes the Message Scroll to display the name of the spell, and whether the spell will continue much longer ("stable" means time remains, "unstable" means the spell will expire shortly).



*Targeted Spells.* Several of the spells in the game must be targeted to affect specific objects. A targeted spell may be cast only at a target within arm's length. When you successfully cast a targeted spell (by right-clicking on your Rune Shelf, or pressing F8), your cursor changes to a targeting cursor, a blue cross. To cast the spell on a specific object, position the cursor on the object in question and right-click to activate it.

*Missile Spells.* A missile spell (such as *Fireball*) hurls a magical projectile at an opponent. When you cast a missile spell, your cursor changes to a red circle. To cast the spell, aim the red circle in the direction you want to launch the missile, and right-click.

If you expect to use magic in a battle, ready your spells prior to the combat, not during it. Remember that you can leave a spell on the right-hand Rune Shelf, to be used at any time. Bear in mind that powerful damaging spells may destroy valuable artifacts near the spell's target.

Before casting a missile spell, make sure there is some open space in front of your character — obstacles close by can interfere with the casting.

*Area Spells.* In addition to the spell-types described above, be aware that some spells affect individuals (your character or another creature) while others may affect entire areas.

Some area spells affect all creatures and/or objects in an area; some affect just one creature and/or object; still others will affect an unpredictable number of creatures and/or objects. Experiment with area spells to learn which ones have which effect.

*Enchanted Items.* As you explore the world you will find powerful magic items. These give the user amazing magical abilities, unrestricted by level or amount of Mana.

Some enchanted items (crowns and rings, for example) are meant to be worn. These take effect as soon as you put them on. Other magic items take effect only when they are Used.

For example, when you put on a *Ring of Speed*, the effect lasts as long as you wear the ring. However, to cast a spell inscribed on a magical scroll, you must Use the scroll.

Note that enchanted items don't look any different than ordinary ones. If your *lore* skill is high enough, you may be able to determine an item's magical function when you Look at it. If you suspect an item is enchanted, but don't learn much the first time you Look at it, try again after you improve your *lore* skill.

# THE EIGHT CIRCLES OF RUNIC MAGIC

## First Circle

IMFA

Create Food (In Mani Ylem) This spell causes a helping of food to appear (instantaneous spell).

ND

Detect Trap (Wis Jux) This spell informs the caster of any non-magical traps on an object (targeted spell).

IT

Light (In Lor) This spell provides illumination (duration spell).

BM

Luck (Bet Ort In) In combat, this spell improves the odds in the caster's favor (duration spell).

RD

Magic Arrow (Ort Jux) This spell fires a magic arrow at an opponent (missile spell).

BIS

Resist Blows (Bet In Sanct) This spell offers the same protection as a suit of head-to-toe armor (duration spell).

## Second Circle

PK

Cause Fear (Quas Corp) This spell can cause an opponent to lose heart and flee (targeted spell).

MND

Deadly Seeker (Ort Wis Jux) This spell releases a projectile that tracks down and strikes an opponent (missile spell).

AK

Jump (Uus Por) This spell increases the height and distance of its caster's jumping ability (duration spell).

IBM

Lesser Heal (In Bet Mani) This spell heals the caster's minor wounds (instantaneous spell).

IPD

Rune of Flame (In Flam Jux) This spell creates a floating rune that explodes into flame if disturbed (instantaneous spell, lasts until disturbed).

RDK

Slow Fall (Rel Des Por) This spell briefly allows the caster to float in the air like a feather (duration spell).

## Third Circle

DM

Bleeding (Jux Mani) This spell drains blood from a selected creature (targeted spell).

RT

Cure Poison (An Nox) This spell acts as an antidote to any poison currently in the caster's system (instantaneous spell).

RD

Dispel Rune (An Jux Ort) This spell dispels any magical runes (targeted spell).

EX

Lightning (Ort Grav) This spell hurls a bolt of arcane energy at an opponent (missile spell).

PT

Night Vision (Quas Lor) This spell allows the caster to see without benefit of torch or candle (duration spell).

RTK

Speed (Rel Tym Por) This spell accelerates the caster's thought and movement (duration spell).

AK

Water Walk (Ylem Por) This spell allows the caster to walk on water (duration spell).

## Fourth Circle

4P

Flameproof (Sanct Flam) This spell briefly grants a partial resistance to damage from flame (duration spell).

1A

Heal (In Mani) This spell heals the caster of even grievous wounds (instantaneous spell).

XHK

Missile Protection (Grav Sanct Por) This spell renders the caster invulnerable to most missiles, and offers protection from others (duration spell).

+PA

Poison Weapon (Nox Jux Ylem) This spell envenoms the caster's weapons (duration spell).

PA

Remove Trap (An Jux) This spell negates a non-magical trap (targeted spell).

NA

Study Monster (Wis Mani) This spell gives the caster knowledge about a creature (targeted spell).

## Fifth Circle

KP

Fireball (Por Flam) This spell hurls a flaming missile at an opponent (missile spell).

APK

Levitate (Uus Hur Por) This spell briefly allows the caster to rise vertically into the air (duration spell).

MNA

Name Enchantment (Ort Wis Ylem) This spell reveals the true nature of the object on which the spell is cast (targeted spell).

MA

Open (Ex Ylem) This spell unlocks a locked door or chest (targeted spell).

FLA

Smite Undead (An Corp Mani) This spell destroys an undead creature (targeted spell).

MKA

Telekinesis (Ort Por Ylem) This spell allows the caster to pick up a single item and use it from a distance (duration spell).

## Sixth Circle

PRN

Charm (Quas Rel Wis) This spell causes the target to become friendly toward the caster (targeted spell).

AI

Daylight (Vas In Lor) This spell provides bright illumination for extended periods of time (duration spell).

ARK

Gate Travel (Vas Rel Por) When cast on one moonstone, this spell takes the caster instantaneously to another moonstone (instantaneous spell).

AIM

Greater Heal (Vas In Mani) This spell brings the caster back to his or her original vigor (full Vitality) (instantaneous spell).

AHT

Invisibility (Vas Sanct Lor) This spell causes the caster to become nearly impossible to detect by normal means (duration spell).

FMK

Paralyze (An Ex Por) This spell prevents the target from moving (targeted spell).

AMX

Sheet Lightning (Vas Ort Grav) This spell causes a cone of lightning bolts to erupt from the caster's hands (instantaneous spell).

## SEVENTH CIRCLE

FKX

Magic Satellite (Ort Por Grav) This spell creates an object that orbits the caster, and that explodes on contact with any creature (instantaneous spell).

AFN

Mass Confusion (Vas An Wis) This spell causes foes to become disoriented (instantaneous spell).

AMA

Portal (Vas Ex Ylem) This spell transports the caster forward some distance, regardless of intervening objects, as long as there is an open space to arrive at (instantaneous spell).

MFY

Reveal (Ort An Quas) This spell reveals hidden objects and concealed exits from the caster's current location (instantaneous spell).

DP

Shockwave (Jux Hur) This spell causes a devastating shockwave to expand outward from the caster's body (instantaneous spell).

## EIGHTH CIRCLE

PD

Flame Wind (Flam Hur) This spell unleashes a storm of fireballs in front of the caster (instantaneous spell).

ADK

Fly (Vas Hur Por) This spell allows the caster to fly through air for a time, and then glide gently to the ground (duration spell).

FT

Freeze Time (An Tym) This spell stops the flow of time for all save the caster (duration spell).

IAH

Iron Flesh (In Vas Sanct) This spell greatly increases resistance to damage (duration spell).

AA

Restoration (Vas Mani) This spell restores the caster to full health, wakefulness and satiation (instantaneous spell).

MKN

Roaming Sight (Ort Por Wis) This spell allows the caster to move his or her point of view at will, regardless of physical constraints (duration spell).





# SKILL LIST

- Acrobat (DX)** Experience in the art of tumbling. This skill reduces damage taken from falls and collisions, and increases jumping ability.
- Appraise (DX)** Training in perceiving the value of goods. This skill aids you in correctly evaluating a deal offered you in barter.
- Attack (ST)** Your skill in offensive fighting. This skill gives a bonus to your chance to hit when attacking.
- Axe (ST)** Training in the use of axes. This skill increases your ability to defend against attack and increases your chance of hitting when attacking with any form of axe.
- Barehand (ST)** Training in unarmed combat. This skill gives a bonus to your chance to hit and to damage when attacking with only your fist.
- Casting (IQ)** The study of spells. This skill improves the likelihood of a spell being successfully cast, and often increases the spell's effects.
- Charisma (DX)** The ability to influence others for your own ends. This skill increases your chances of obtaining a good deal when bartering.
- Defense (ST)** Your ability to defend yourself in combat. This skill applies a penalty against foes who are trying to strike you.
- Lore (IQ)** The ability to correctly identify an item. This skill improves the accuracy of the information you gain when Looking at an object.
- Mace (ST)** Training in the use of blunt weapons. This skill increases your ability to defend against attack and gives a bonus to hit when using a mace or cudgel.
- Mana (IQ)** Your ability to manipulate magical energy. This skill increases your maximum number of Mana points.
- Missile (ST)** Training in the use of missile weapons. This skill increases the damage you inflict in attacks using bows, crossbows and slings.
- Picklock (DX)** The ability to use lock-picking tools. This skill increases your chances of using a lockpick to open a locked door or chest.
- Repair (DX)** The ability to fix weapons and armor. This skill increases your chance of using an anvil to repair items successfully.
- Search (DX)** Training which heightens your perceptions. This skill increases your chance of detecting hidden doors and traps. It is applied automatically whenever you Look at something.
- Stealth (DX)** The ability to move quietly. This skill reduces the amount of noise you make, making it less likely that creatures will notice you.
- Swimming (DX)** Training in speed and endurance swimming. This skill increases your movement rate in water, and postpones drowning.
- Sword (ST)** Training in swordsmanship. This skill increases your chance of defending against attack and provides a bonus to your chance to hit when striking with swords and daggers.
- Track (DX)** The ability to perceive animal tracks. This skill helps tell you when creatures are near.
- Traps (DX)** The ability to render a trap harmless. This skill automatically disarms any traps you find.

# CREDITS

<i>Creative Director</i> .....	<i>Paul Neurath</i>	<i>Programmers</i> ...	<i>James Fleming, Mark Leblanc, Fred Lim, Jon Maiara, Dan Schmidt, Tim Stellmach, Greg Travis</i>
<i>Producer</i> .....	<i>Warren Spector</i>	<i>Underworld I Programmers</i> .....	<i>Jon Maiara, Doug Church, Jonathan Arnold, Ed Nelson, Dan Schmidt, Carlos Smith</i>
<i>Project Leader</i> .....	<i>Doug Church</i>	<i>Bug Tracking Database</i> .....	<i>Brad Goldman, Courtney Moriarta</i>
<i>Creature Art</i> .....	<i>Whitney Caughlin, Karl Dolgener, Carolly Hauksdottir, Bill Narum, Micael Priest, Dan Bourbounnais, Jeff Dee, Robert Frye, James Fleming, Jerry O'Flaherty, Stu Shepherd</i>	<i>Onsite Q.A.</i> .....	<i>Brad Goldman, Courtney Moriarta, Ron Aruta</i>
<i>Screen Designs, Objects</i> .....	<i>Doug Wike</i>	<i>Guest Playtester</i> .....	<i>Kevin Wasserman</i>
<i>Textures</i> .....	<i>James Dollar, Doug Wike</i>	<i>Playtesting</i> .....	<i>Laura Baldwin, Michelle Bush, Nick Carter, Rob Fermier, Kent Lundberg, Cael Macayre, Bart Mallio, Sarinda Newell, Mike Person, Paul X. Shawcross</i>
<i>Manual Art</i> .....	<i>Glen Johnson</i>	<i>Q.A. Manager</i> .....	<i>Jeff Shelton,</i>
<i>Map Art</i> .....	<i>Terry Manderfeld</i>	<i>Q.A. Test Supervisor</i> .....	<i>Scott Shelton</i>
<i>Intro, End Game Cut Scenes</i> .....	<i>James Dollar</i>	<i>ORIGIN Q.A.</i> ..	<i>Robert Hill, August Goodman Ben Potter, Andrew Hofmann, Dee Starns, Russell Byrd, Greg Hynson, Don Derouen, Charles Angel, Jonathan Einsig, Mike Pell, Jason Smith, Mike Chenault, Bill LaCoste, Starr Long, Marshall Andrews</i>
<i>Portraits</i> .....	<i>James Dollar, Karl Dolgener, Micael Priest, Robert Frye, Doug Wike</i>	<i>Box Cover Art</i> .....	<i>Denis Loubet</i>
<i>3-D Shapes</i> .....	<i>Josh White</i>	<i>Box Design</i> .....	<i>Craig Miller</i>
<i>AIL Sound and Music System</i> .....	<i>John Miles</i>	<i>Manuals</i>	
<i>Music</i> .....	<i>Jon Blackley, Dan Schmidt</i>	<i>Writing</i> .....	<i>Austin Grossman, Warren Spector</i>
<i>Sound Effects</i> .....	<i>Rob Wallace</i>	<i>Editing</i> .....	<i>David Ladyman</i>
<i>Guardian Voice</i> .....	<i>Bill Johnson</i>	<i>Graphic Design</i> .....	<i>Jennifer Davis</i>
<i>Voice Recording</i> .....	<i>Randy Buck</i>		
<i>Design Concept</i> ..	<i>Doug Church, Paul Neurath</i>		
<i>Lead Writer</i> .....	<i>Austin Grossman</i>		
<i>Conversations</i> .....	<i>Dr. Cat, Austin Grossman, Dorian Hart</i>		
<i>Lead Designer</i> .....	<i>Tim Stellmach</i>		
<i>World Construction</i> ....	<i>Dr. Cat, Doug Church, Dorian Hart, Mark Leblanc, Tim Stellmach</i>		
<i>Lead Programmer</i> .....	<i>Doug Church</i>		

# Ultima<sup>®</sup> Underworld<sup>™</sup> II Labyrinth of Worlds<sup>™</sup>

## DESIGNERS' NOTES

In designing the *Underworld* system, one of the things we attempted to do was to merge traditional fantasy RPG elements, such as quests and combats and explorations, with a sophisticated three-dimensional simulation of a sensible and believable world.

We feel that one of *Underworld*'s strongest features is its capacity to generate situations and strategies that we did not script, but that arose from the scenarios we created. For example: Suppose there's a Despoiler daemon guarding the key to that door. Maybe I should come back when I can take him hand-to-hand ... or bring up my *picklock* skill ... or throw this sling stone at him, see if he'll chase me ... or maybe I can sneak past him — how good is a Despoiler's eyesight? And can he swim ...?

We also decided to make *Underworld II* a non-linear gaming environment. This means that nearly all the adventuring locales will contain areas that will be too difficult for you the first time you arrive there. In order to win the game, you will need to visit and revisit dungeons, exploring new areas each time. So if your foe seems to be getting the better of you time and time again, it would be wise to explore elsewhere for a while, until your character is more powerful.

Here are some of the features of *Underworld II* we hope you will enjoy:

**Depth of Simulation.** When the 3-D world gets sufficiently complex, a player's choice of actions grows exponentially. We've created the world, and tried to set things up so that you can do what you like in it. (But you're not the only one in the world — non-player characters have plenty of options too.)

**Realism.** Rivers, ice, torches burning out, armor and weapons whose performance depends on quality, food levels, different lighting levels, and other elements are designed to maximize the realism and detail. When you pick up an item, all creatures who care about that item are checked to see if they notice; when you make noise, creatures will turn to face the noise source, and if you are still there when they finish turning they will see you, and decide whether or not they want to attack ....

**Multiple Solutions.** Well, we know there are at least a couple of ways of getting through each area/puzzle in the game. However, we don't know how many ways you'll discover.

# THE RUNES OF MAGIC



AN  
Negate



BET  
Small



CORP  
Death



DES  
Down



EX  
Freedom



FLAM  
Flame



GRAV  
Energy



HUR  
Wind



IN  
Cause



JUX  
Harm



KAL  
Summon



LOR  
Light



MANI  
Life



NOX  
Poison



ORT  
Magic



POR  
Movement



QUAS  
Illusion



REL  
Change



SANCT  
Protection



TYM  
Time



UUS  
Raise



VAS  
Great



WIS  
Knowledge



YLEM  
Matter